



SINGLE BARREL USER MANUAL



www.armelegant.com

THIS MANUAL CONTAINS

Important warnings, which should be read and understood before using this firearm. SAFE GUN HANDLING IS YOUR PERSONAL RESPONSIBILITY AT ALL TIMES. Disregarding warnings in this manual may result in injury or death to you and others and damage to property.

Directions and procedures for handling, loading firing and unloading instructions for care, cleaning repair and service of this shotgun.

This instruction and safety manual is designed to help you in learning how to properly use and care for your ARMELEGANT Single Barrel shotgun. Only when you are certain you have familiarized yourself with the function of your firearm should you practice loading unloading and firing live rounds of ammunition.

This instruction manual should always accompany this firearm, and be transferred with it upon change of ownership. Should you ever need to replace it? This manual is available FREE upon request from ARMELEGANT.

DISCLAIMER OF LIABILITY

ARMELEGANT shall not be responsible for product malfunctioning or for physical injury, death or damage to property resulting from either intentional or accidental discharge of this firearm, its criminal or negligent use. Improper or careless handling, unauthorized modifications or alteration, use of defective or improper or hand-loaded or (replaced) ammunition, or from its use for purposes or subjection to treatment for which it was not designed.

For your safety, use only original high quality commercially manufactured ammunition in good condition that is appropriate to the caliber/gauge of your gun

ARMELEGANT shall not be responsible for product or its result from use of defective, improper or reloaded ammunition.

WARNING - LEAD EXPOSURE

Discharging firearms in poorly ventilated areas, cleaning firearms or handling ammunition may result in exposure to lead and other substances that may cause birth defects, reproductive harm and other serious physical injury. Have adequate ventilation at all times. Wash your hands thoroughly after exposure. Shooting or cleaning guns may expose you to lead.

WARNING:

Prior to removing this gun from its packaging, and prior to loading and firing, carefully and thoroughly read the entire instruction manual which gives advice on the gun's proper handling and functioning.

However, your safety and that of others (including your family) depends on your responsible compliance with that advice. If unfamiliar with firearms seek supervised instruction.

FIREARMS SAFETY IS YOUR RESPONSIBILITY.

GENERAL SAFETY WARNINGS

Careless and improper handling of this gun could result in unintended discharge causing injury, death or damage to property. Safety must be the first and constant consideration when handling a firearm and ammunition.

This shotgun was designed to function properly in its original condition. Alterations can make it unsafe. Do not alter any part or add or replace parts.

Shotguns should only be carried with the action open and chamber empty to prevent accidental discharge.

Always handle and treat your gun as if it were loaded so you never fire it accidentally when you think it is unloaded.

Never take anyone's word it is unloaded. Always check it yourself with your fingers off the trigger and the gun pointed in a safe direction.

Never place your finger inside the trigger guard unless you intend to fire.

Water, snow, mud, excessive lubricating oil or grease or any other material can obstruct the barrel of your gun. Always check the barrel of your firearm for obstruction before loading and firing. Clean a fouled gun immediately to ensure its correct and safe function.

Keep the gun's muzzle pointed in a safe direction at all times. Never let the muzzle of a firearm point at any part of your body, another person or at anything you do not intend to shoot. Always be certain of your target before firing.

Be sure you have and are using the proper ammunition. Use only high quality ammunition specifically designed for your gauge of shotgun. The barrel is marked with the size of shot shell it will accept. If the barrel is marked "3" it will accept 3 inch and 2 3/4 inch shot shells. Never load the chamber with a shell that is longer than the chamber is marked.

UNLOAD ALL FIREARMS WHEN NOT IN USE. NEVER STORE A LOADED FIREARM

Firearms and ammunition should be safely stored separately so that they are inaccessible to children or unauthorized users.

Always make sure your gun is unloaded before cleaning, storing or handing it to another person.

Always wear safety glasses while shooting to protect your eyes from injury by gun powder, gas, lubricant, dirt or metallic particles, carbon residue, sparks or other debris.

Always wear ear protection when shooting, especially on a range. Without ear protection, the noise from your gun, and other guns close to you, could leave a "ringing" in the ears for some time after firing. Repeated exposure to shooting noise could result in permanent hearing loss.

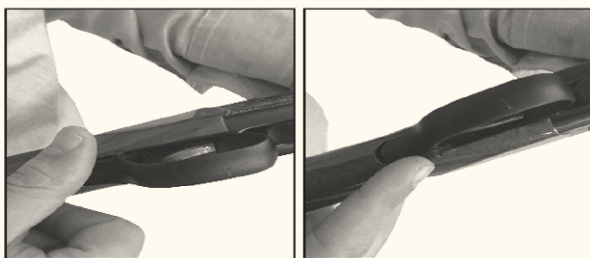
Never climb a tree, fence or wall while carrying a loaded firearm. Remove ammunition and hand the gun to someone else or place it on the ground on the other side of the obstacle before crossing it yourself.

DO NOT lean a gun against a tree or other obstacle; it could fall and possibly discharge.

DO NOT shoot at a hard surface or at water. Bullets and shot can ricochet or bounce off and travel in unpredictable directions with great velocity.

Firearms and alcohol DO NOT mix. Never drink alcoholic beverages or take drugs before or during shooting, as this constitutes criminal disregard for your safety and that of others. Never use a gun while you are taking medication unless you have checked with your doctor to ensure your fitness to handle your gun safely.

If you have any doubts about your ability to handle or use this shotgun safely, seek supervised instruction.



BREAK OPEN LEVER

The Break Open Lever is located in front of the trigger guard and controls the locking of the breech of the barrel to the receiver. To open the gun, pull the Break Open Lever fully rearward and ease down the barrel.

NOTE: Pulling the Break Open Lever partially rearward will not disengage the locking of the breech. The Break Open Lever may appear to be pulled back fully rearward, but is not. Pulling the Break Open Lever slightly further will fully disengage the locking of the breech.

SAFETY BUTTON

The safety button is located at the rear of the trigger guard and must be manually moved to the desired position by the shooter.

To put the safety in the "Safe" or "On" position, the safety button must be pushed from the left side so that it moves all the way to the right. The button must always be pushed fully to the right until it moves no further to be in the "Safe" or "On" position.

The safety button is designed to function only as described above and should not be reversed. DO NOT attempt to remove or reverse the safety button. Doing so may result in an unsafe condition which can cause serious injury or death.

WARNING: *Do not rely solely on your gun's safety. Treat every gun as if it is loaded and ready to fire. The safety is a mechanical devise and is not intended to serve as a substitute for common sense or safe gun handling. Always keep the muzzle pointed in a safe direction.*

AMMUNITION

Be sure you have and are using the proper ammunition. Use only high quality ammunition specifically designed for your gauge of shotgun. The barrel is marked with the size of shotshell it will accept. If the barrel is marked "3" it will accept 3 inch and 2 3/4 inch shot shells. Never load the chamber with a shell that is longer than the chamber is marked.

USE OF THE CHOKES (STEEL SHOT WARNING)

(FOR MODELS EQUIPPED WITH MOBILE CHOKES ONLY)

You should be aware of the following differences and cautions:

Never shoot steel shot loads in a full choked barrel or an improved modified choked barrel.

To do so may cause the barrel to swell or rupture. The choke (constriction) in all modern shotguns has been established based on the pattern performance of shot shells loaded with lead shot. When using steel shot shells, you will notice a different performance in pattern density versus the established lead shot pattern, because steel shot is harder and lighter than lead shot.

In general, steel shot fired with a modified choke will produce the equivalent of a lead shot full choke pattern. This is true of all steel shot sized up to and including no. 2. The established improved cylinder choke will produce the equivalent of a (lead) modified pattern.

All steel shot sized larger than no. 2, and including special sized such as BB, BBB, T, F, etc., should be used with improved cylinder and cylinder (skeet) chokes. These steel shot sizes, when used in an improved cylinder choke, will produce the equivalent to (lead) full choke patterns. The cylinder choke or bore will produce the equivalent of a modified (lead) pattern.

WARNING: THE ACCIDENTAL LOADING AND DISCHARGE OF SHELLS OF THE WRONG GAUGE IN YOUR GUN CAN RESULT IN DAMAGE TO YOUR GUN AND INJURY TO THE SHOOTER AND/OR OTHERS. *To be safe, carry only the proper gauge ammunition when shooting.*

LOADING

WARNING: *Read and understand all instructions and warnings in this manual BEFORE using this shotgun. It is important to learn the parts of your shotgun and their functions before using this firearm. Be sure of the target and what is beyond before firing.*

To load your ARMELEGANT Single Barrel shotgun, be sure the safety is in the "Safe" or "On" position, pull the Break Open Lever fully rearward and open the action. This will cause the lock to disengage and allow the barrel to pivot downward exposing the chamber. Insert shot shell of the appropriate gauge and size into the chamber. When you are finished loading the chamber, close the breech by lifting up on the barrel and close the action. The Break Open Lever will make an audible "Click" when the breech is closed and locked.

FIRING

WARNING: *Read and understand all instructions and warnings in this manual BEFORE using this shotgun. It is important to learn the parts of your shotgun and their functions before using this firearm. Be sure of your target and what is beyond before firing.*

After inserting the shot shell into the chamber, close and lock the breech. Your shotgun is ready to fire. Disengage the safety by pushing the safety button to the "Fire" or "Off" position, the safety button must be pushed from the right side so that it moves all the way to the left. The button must always be pushed fully to the left until it moves no further to be in the "Fire" or "Off" position. This will display a red band marking around the safety as an indicator that the safety is in the "Fire" or "Off" position.

For ARMELEGANT Single Barrel shotguns, pulling the trigger through its full travel to the rear will fire the shotgun and discharge the shell.

Caution: In case of a misfire, wait at least 30 seconds while keeping the gun pointed in a safe direction. Then, carefully open the action away from yourself and others. If the primer on the rim is indented, the shell should be discarded in a manner that would prevent accidental injury to you and/or those around you. If there is no indentation on the primer or rim, your gun has malfunctioned and should be serviced by a qualified gunsmith. If the gun is under warranty it must be serviced by an authorized ARMELEGANT Gunsmith to not void warranty.

If at any time during firing, the sound of any shell is noticeably louder or softer than the previous shells fired, STOP! DO NOT load or fire additional shells until you have put the safety in the "Safe" or "On" position and safely unloaded your shotgun. Inspect the shotgun for possible damage or obstructions in the chamber or bore. (The bore is the inside surface of the barrel). Firing the shotgun with a bore obstruction can cause damage to the firearm and may result in serious injury to you and/or those around you.

UNLOADING

WARNING: *Read and understand all instructions and warnings in this manual BEFORE using this shotgun.*

Always keep the shotgun pointed in a safe direction and the safety in the "Safe" or "Opposition."

Before unloading, check to assure that the safety is in the "Safe" or "On" position. At no time during unloading should you allow your fingers or any other object to touch the trigger. Next, pull the Break Open Lever fully rearward and open the action. Fulling the barrel downward fully will partially elevate any fired or unfired shell in the chamber for easy removal by hand.

MAINTENANCE AND CLEANING

CAUTION: Make sure the gun is UNLOADED Make sure the broad, polished finely fitted mating surface of the breech block and receiver is especially clean and lightly oiled with high quality gun oil. DO NOT use silicone or lanolin.

Run an oil patch through the bore with a cleaning rod starting from the breech end.

To prevent leading, use a cleaning solvent and brass brush to clean the bore periodically. Follow this cleaning with one or two clean oil patches.

Wipe all exposed metal surfaces with an oiled cloth before storing. DO NOT squirt or pour oil into the inside mechanism because it may hamper proper functioning. After extended periods of heavy use, your gun should be taken to a qualified gunsmith to have the action disassembled for professional cleaning and lubrication.

STORAGE

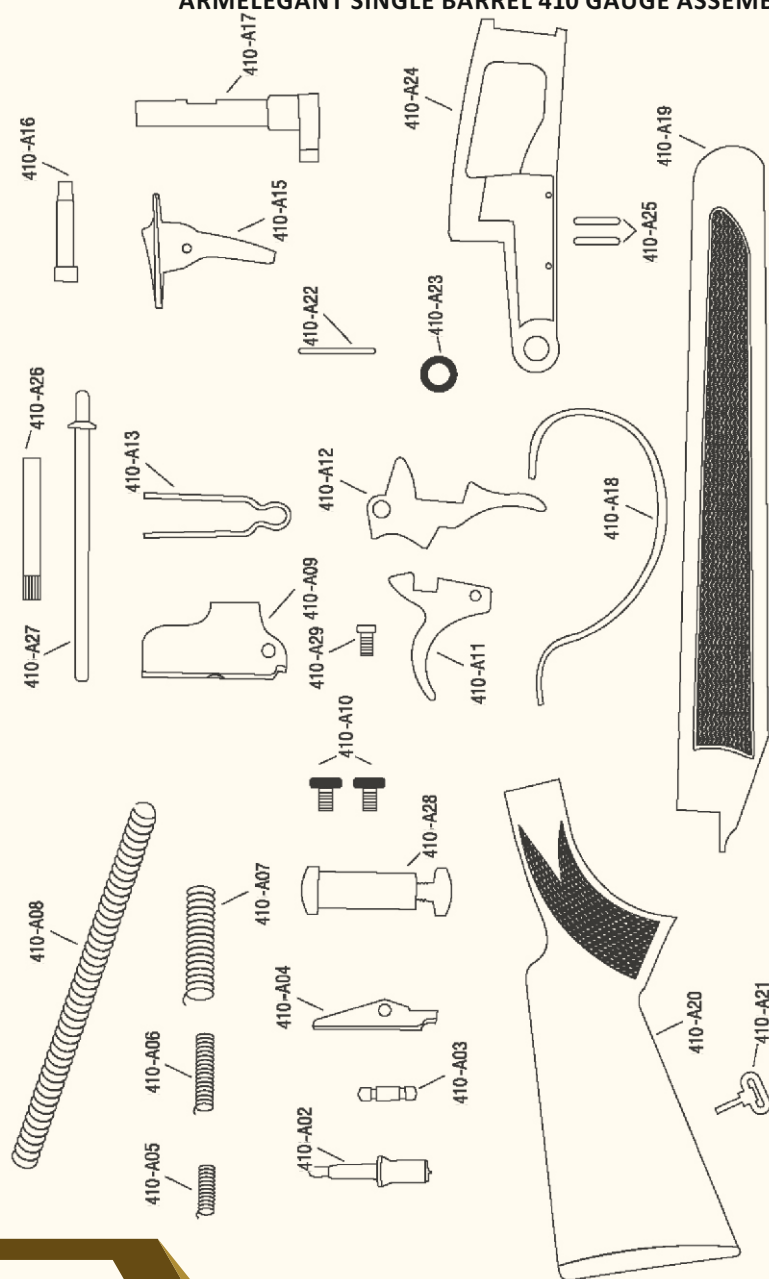
Clean thoroughly and oil your gun before storage. Store your firearm in a dry place to prevent corrosion. Store the gun away from children and in a place where it cannot be obtained by those unauthorized to use it. Always store gun unloaded and separately from any ammunition.

USE YOUR SHOTGUN CAREFULLY AND SAFELY HAZARDOUS MATERIAL

WARNING

Discharging firearms in poorly ventilated areas, cleaning firearms or handling ammunition may result in exposure to lead and other substances that may cause birth defects, reproductive harm and other serious physical injury. Have adequate ventilation at all times. Wash your hands thoroughly after exposure. Shooting or cleaning guns may expose you to lead.

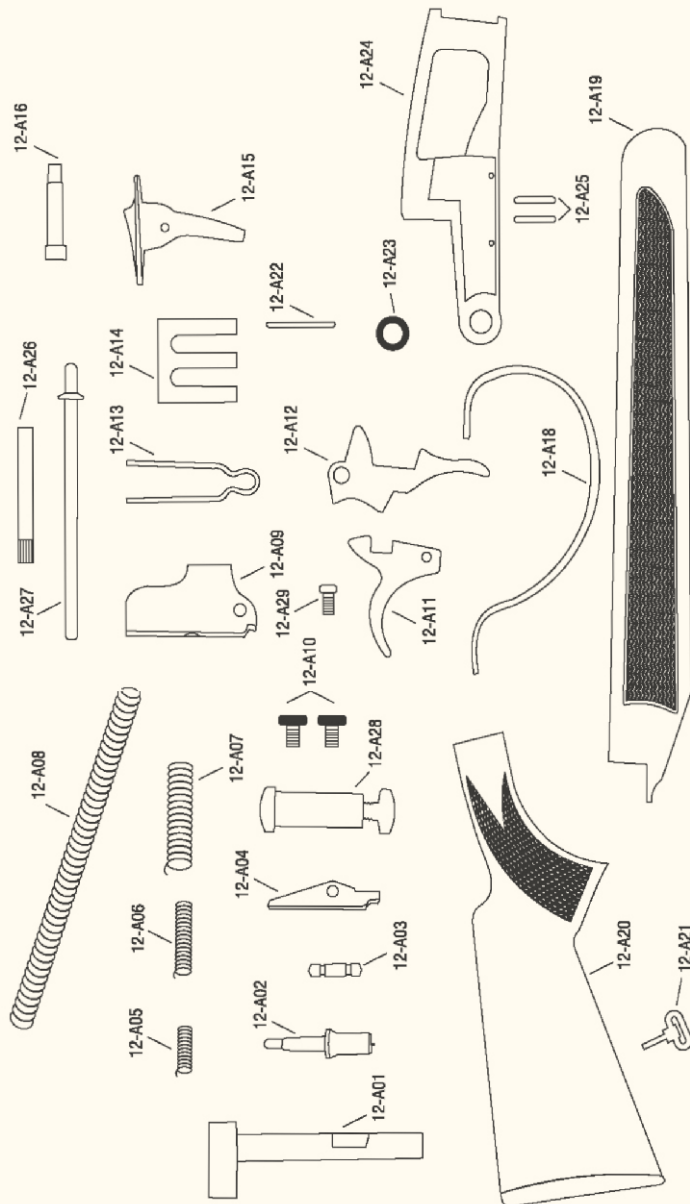
ARMELEGANT SINGLE BARREL 410 GAUGE ASSEMBLY



ARMELEGANT SINGLE BARREL 410 GAUGE PART LIST

CODE NO	DESCRIPTION
410-A02	FIRING PIN
410-A03	SAFETY PLUNGER SPRING PIN
410-A04	INSIDE TRIGGER
410-A05	INSIDE TRIGGER SPRING
410-A06	FIRING SPRING PIN
410-A07	LATCH SPRING
410-A08	HAMMER SPRING
410-A09	HAMMER
410-A10	RECEIVER SCREW
410-A11	TRIGGER
410-A12	TOP LEVER
410-A13	SAFETY PLUNGER SPRING
410-A15	SAFETY
410-A16	EXTRACTOR PIN
410-A17	EXTRACTOR
410-A18	TRIGGER CASE
410-A19	FORE - END
410-A20	STOCK
410-A21	SWIVEL
410-A22	SWIVEL PIN
410-A23	EXTRACTOR PIN BOLT
410-A24	RECEIVER
410-A25	TRIGGER PIN
410-A26	TOP LEVER NUT
410-A27	HAMMER SPRING PIN
410-A28	RECEIVER ASSEMBLY SCREW

ARMELEGANT SINGLE BARREL 12 GAUGE ASSEMBLY



ARMELEGANT SINGLE BARREL 36 GAUGE PART LIST

CODE NO	DESCRIPTION
12-A01	EXTRACTOR
12-A02	FRING PIN
12-A03	SAFETY PIN
12-A04	INSIDE TRIGGER
12-A05	INSIDE TRIGGER SPRING
12-A06	LATCH SPRING
12-A07	LATCH PIN
12-A08	HAMMER SPRING
12-A09	HAMMER
12-A10	THE MAIN SCREW SCREW
12-A11	TRIGGER
12-A12	TOP LEVER
12-A13	SAFETY PLUNGER SPRING
12-A14	LATCH SPRING
12-A15	SAFETY
12-A16	LATCH FOR HAMMER
12-A18	TRIGGER GUARD
12-A19	FORE - END
12-A20	STOCK
12-A21	SWIVEL
12-A22	LATCH PIN
12-A23	LATCH FOR HAMMER PIN
12-A24	RECEIVER
12-A25	TRIGGER PIN
12-A26	TOP LEVER NUT
12-A27	HAMMER SPRING PIN
12-A28	RECEIVER ASSEMBLY SPRING



www.armelegant.com

KONYA - TURKEY

info@armelegant.com

+90 850 305 40 64